

COR-TEN®

Corrosion resistant steel - Weathering Steel



EN 10025-5 Dast 007.

5 mm.

COR-TEN

	C	Si	Mn	P	S	Cr	Cu	V	Ni
COR-TEN A	0.12	0.25-0.75	0.20-0.50	0.07-0.15	0.030	0.50-1.25	0.25-0.55		0.65
COR-TEN B	0.16	0.30-0.50	0.80-1.25	0.030	0.030	0.40-0.65	0.25-0.40	0.02-0.10	0.40

3mm (EN10002).

3mm EN 10025-5.

	R_{eH} MPa *	R_m MPa	$(\sigma = 5.65 \sigma_s)$ %
COR-TEN	355	470 - 630	20

*) 1 MPa = 1 N/mm²

min 445 Mpa.

310 Mpa

3mm **COR-TEN A-** 275

25%.

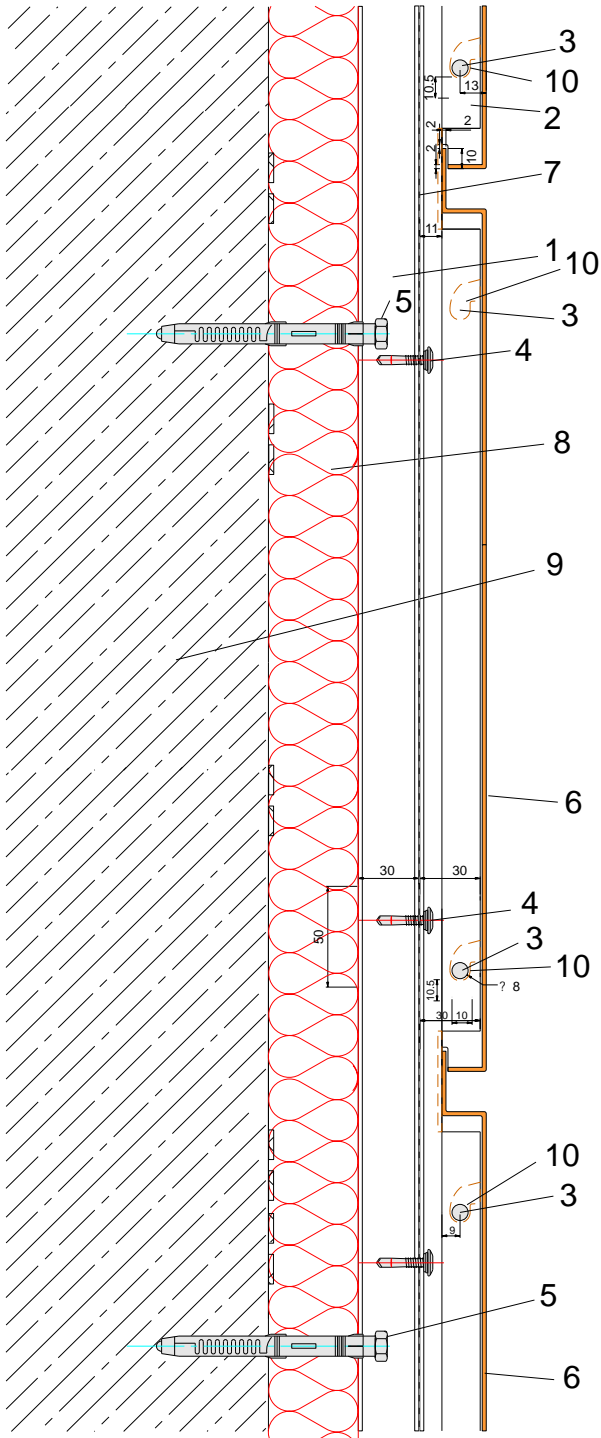
410 Pa, EN 1013.

3mm (EN10002).

3mm EN 10025-5.

	mm	R_{eH} MPa *	R_m MPa	$(\sigma = 5.65 \sigma_s)$ %
COR-TEN B	16	355	470 - 630	20
	> 16 50	345		

*) 1 MPa = 1 N/mm²



- 1. U 30 30 2 μ o 50 30 2
- 2. U 30 30 2 μ Cor-ten.
- 3. 8 20 Cor-ten.
- 4. 4 25 μ μ neopren.
- 5. Stahl III μ beton.
- 6. Cor-ten.
- 7. μ μ .
- 8. μ .
- 9. Beton.
- 10. neopren.

Corten A, *

COR-TEN®

W. Nr. 1.8946, APZ
DIN EN 10204/3.1

mm	1	1,5	2	2,5
1000 X 2000	●		●	
1250 X 2500	●	●	●	●
1500 X 3000	●	●	●	●

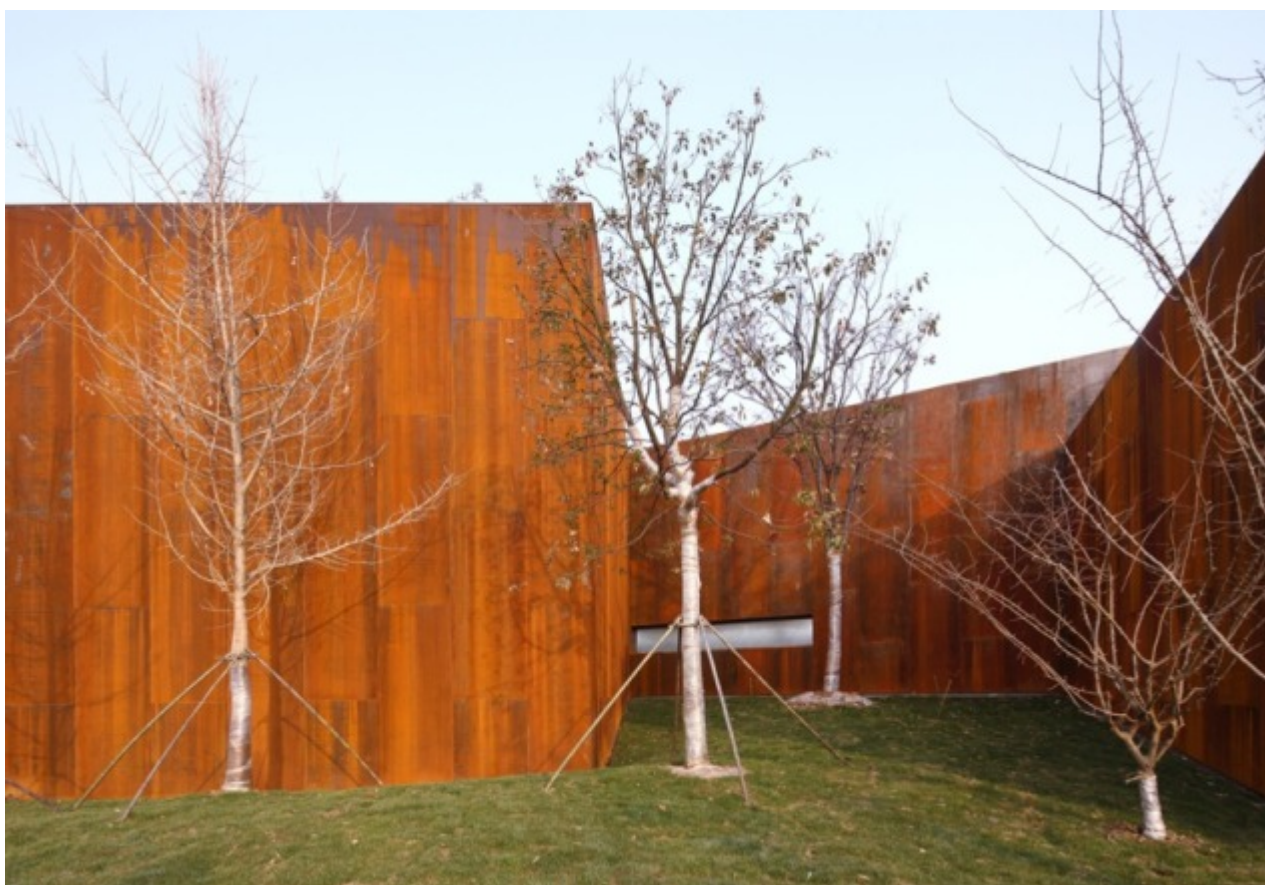
μ

-
-
- μ
-
-
- μ
-
-

Corten B/S355J2W + N,
W. Nr. 1.8965, APZ
DIN EN 10204/3.1

mm	3	4	5	6	8	10	12	14	15	16
1000 X 2000			●	●	●	●	●	●	●	●
1250 X 2500	●	●	●	●	●	●	●		●	
1500 X 3000	●	●	●	●	●	●	●		●	
1500 X 6000	●	●	●	●	●	●	●		●	
2000 X 6000		●	●	●	●	●	●	●	●	●
2000 X 8000					●	●	●			
2000 X 12000			●	●	●	●	●	●	●	●
2000 X 16000					●	●	●			
2500 X 6000			●	●	●	●	●		●	
2500 X 12000			●	●	●	●	●		●	
3000 X 6000				●	●	●	●		●	
3000 X 12000				●	●	●	●		●	

mm	18	20	25	30	35	40	50	60
1000 X 2000	●	●	●	●	●	●	●	●
1250 X 2500		●	●	●		●	●	
1500 X 3000		●						
1500 X 6000		●						
2000 X 6000	●	●	●	●	●	●	●	●
2000 X 12000	●	●	●	●	●	●	●	●
2500 X 6000		●	●	●		●	●	
2500 X 12000		●	●	●		●	●	
3000 X 6000		●						
3000 X 12000		●						





ΑΝΩΝΥΜΗ ΕΜΠΟΡΙΚΗ ΚΑΤΑΣΚΕΥΑΣΤΙΚΗ ΕΤΑΙΡΙΑ ΔΟΜΙΚΩΝ ΥΛΙΚΩΝ

- : . 1, 54621 : 2310285171 - 2310264822, Fax: 2310263744
- / : . , : 2310685224 - 2310686224
- INTERNET: www.isaakidis.gr - e-mail: info@isaakidis.gr